

# SPRAY GUN INSTRUCTION MANUAL






## 1. How to use

- (1) Paint Cup and Air Hose must be fixed on Spray Gun tight with the spanner attached.
- (2) 2kgf/cm will be the most adequate spraying air pressure thought it may vary depending on viscosity,nature and condition of paint.
- (3) 10 to 15 cm will be the most proper distance for spray work.Finge paint finish cannot be expected if sprayed either too close, too far or being swung circularly.
- (4) Air eliminates fust sprayed article by pulling trigger when Fluid Adjusting Screw is fully tightened clockwise.
- (5) Air Cap should be placed with top of Fluid Nozzle extruded about 0.1–0.2mm ahead from front face of the Air Cap and fixed tight with attached Cap Lock Nut.
- (6) Volume of air is adjusted by Air Adjusting Screw.In case of turning fully it clockwise, no air comes out and air increases in case of turning it anti-clockwise.Volvme of fluid is adjusted by Fluid Adjusting Screw likewise.
- (7) Sprayed pattern becomes "round" in case of turning fully Spreader Adjusting Screw clockwise and "oval" in case of turning it anti-clockwise.

## 2. Maintenance

- (1) Soak the whole Gun Body into clean solvent and cleanse it well.  
Clean solvent must be used for dust not to enter the air passage and make trouble.
- (2) First, disassemble Air Cap and Fluid Nozzle. Soak them in solvent and then wash them with a brush or the like.Care must be taken not to hurt Fluid Nozzle of F-2 and it should be disassembled with a spanner on the second hexagon portion from front side.
- (3) Cleaning of paint passage must be done in a manner to spray a little amount of solvent as if the gun is used for actual spray work.
- (4) Fasten the Needle Packing Screw by pulling the Trigger and adjusting the screw so as not to fasten it too tight.
- (5) Care must be taken absolutely not hurt each hole of Air Cap and the center hole of Fluid Nozzle.

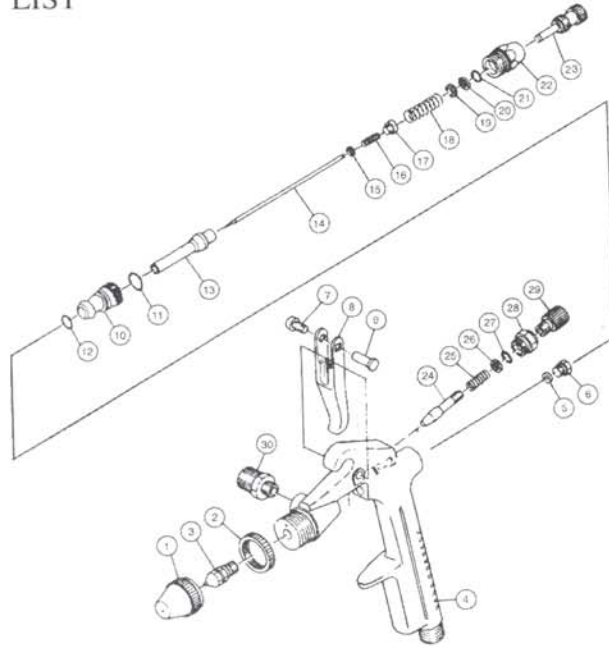
## 3. Causes of Defective and countermeasures

Symptom	Possible cause (s)	Corrective Action
Paint breaking 	1. Air gets mixed with paint in the paint passage attributable to Needle Packing being worn out. 2. Loosen or scar(s)on matching portion in between AFluid Nozzle and taper seat face. 3. Air mixing affributable to loosening of Coupling Nut of Paint Cup.	1. Replace O-Ring with new one, or tighten the Packing Screw furtherer. 2. Complete the fastening. Or,replace the faulty part. 3. Tighten it perfectly.
one-sided pattern 	1. A portion of square bore of Air Cap is clogged. 2. Adhesion of solid dirt at the top of Fluid Nozzle.	1. Dirt inside square bore must be eliminated. (Needle or wire must not be used.)
Crescent pattern 	1. A portion of square bore of Air Cap is clogged	1. Eliminate the dirt from the square bore.
Narrow pattern 	1. Air pressure from the square bore of Air Cap is critically high. 2. Paint viscosity is too thin.	1. Reduce the air pressure. 2. Adjust paint viscosity
Thick pattern 	1. Clearance between Nozzle outs de diameter and the center bore of Air Cap gets worn wider. 2. Air pressure from the square bore of Air Cap gets excessively low. 3. Paint viscosity is excessively high.	1. Reduce the part with new one. 2. Rate up spraying pressure. 3. Adjust paint viscosoty.

## F-2 SPRAY GUN

Model	Type of Feed	Fluid Nozzle Orifice Size mm (in)	Required Air Pressure kgf/cm(psi)	Air Consumption (at Required Perssure) l/min(c.f.m)	Paint Output cc/min	Max Pattern width mm
F-2	Gravity	0.5	2.5-4.5	35	30	30

### SPARE PARTS LIST



### PARTS LIST

NO.	PARTS LIST	DESCRIPTION	QUTY	NO.	PARTS LIST	DESCRIPTION	QUTY
1	F0201	Air Cap	1	16	F02094	Fluid Needle Spring	1
2	F0202	Cap Lock Nut	1	17	F02095	Fluid Valve Seat	1
3	F0203	Fluid Nozzle	1	18	F02101	Fluid Adj.Stop Ring	1
4	F0205	Gun Body	1	19	F02061	Spread Adj.Stop Ring	1
5	F02042	Packing-Fluid Needle	1	20	F02103	Fluid Adj.Set	1
6	F02041	Neele Packing Seat	1	21	W71062	Spread Adj.0 Ring	1
7	W7120	Stop Ring	1	22	F0211	Fluid Lock Nut	1
8	F0219	Trigger	1	23	F0212	Fluid Adj.Knob	1
9	F0218	Trogger Stud	1	24	F02064	Fluid Adj.Valve	1
10	F02081	Fulid Ady.Guide	1	25	F02066	Spread Adj.Spring	1
11	F02082	0 Ring	1	26	F02103	Fluid Adj.Set	1
12	F02083	0 Ring	1	27	W71062	Fluid Adj.0 Ring	1
13	F02092	Air Valve	1	28	F02063	Spread Lock Nut	1
14	F02091	Needle Valve	1	29	F02065	Spread Valve Seat	1
15	F02093	Fluid Adj.Guide	1	30	F0221	Fluid Joint	1