

# INSTRUCTIONS

## Installation:

1. A flexible hose connection must be used between the hose reel inlet and the source of supply to prevent possible misalignment and binding.
2. Install the reels above 10 feet from the floor.
3. If the reel you have bought is unassembled hose, you must purchase proper hose and attach hose to reel.
4. The hose reel is equipped with a wide slots for easy installation so that it can be mounted on the floor/ wall/ ceiling, whichever place is convenient.
5. Apply Teflon tape or thread sealant to Inlet Hose threads and attach one end to Reel Inlet.
6. Apply Teflon tape or thread sealant to Outlet Hose Fitting. Attach outlet to air tools.
7. Must use a FLEXIBLE inlet hose, and a swivel type connector is required on air compressor.

## Replacement of Hose:

1. Wind spool flange clockwise-facing swivel-until spring is tight
2. Pull out all the Hose and lock the Reel in that position.  
**Caution:** Make sure reel is securely locked and will not rotate back.
3. Insert hose through roller guide and hole in spool flange
4. Connect hose fitting to swivel joint and secure hose with clamps.
5. Carefully disconnect Hose from Swivel Joint on side of Reel and remove old Hose.
6. The Male fitting should now be on the outside of the Drum. Apply Teflon tape or thread sealant and connect Hose Fitting to the Swivel Joint. Secure Hose rigid with hose Clamp.

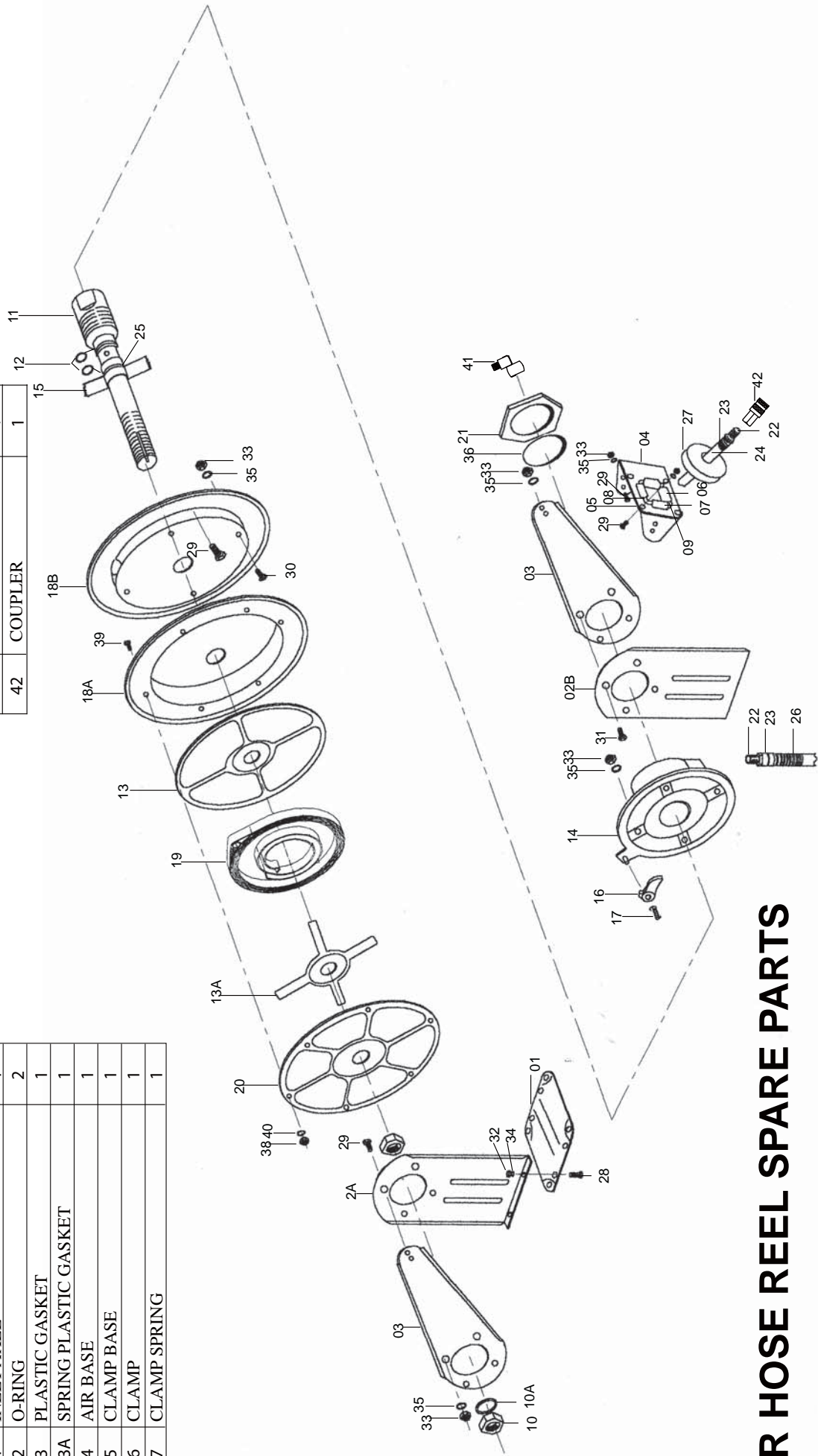
## Adjustments:

1. To adjust spring tension, add or remove wraps of hose from the spool, one wrap at a time until desired tension is obtained.
2. Pull out 6" (or 2m) of Hose and latch the drum.
3. Add one wrap of hose to the Drum to increase tension or take away one wrap to decrease tension.
4. Connect Inlet Hose.

## Safety Precautions

1. Make sure incoming pressure does not exceed 250 PSI.
2. Use proper eye protection when assembling and using the hose reel.
3. Use sap and water when checking for air leaks.
4. Do not expose fingers or hands directly to a pressurized air hose, or it will result in severe body injury.
5. Keep children away from the work area.

No.	Description	Q'ty	No.	Description	Q'ty	No.	Description	Q'ty
01	BASE	1	18A	FRANGE, LEFT	1	29	HEX SCREW	16
2A	SUPPORT BRACKET	1	18B	FRANGE, RIGHT	1	30	FLAT SCREW	4
2B	SUPPORT BRACKET	1	19	DRIVE SPRING	1	31	FLAT SCREW	4
03	GUIDE ARM	2	20	REEL COVER	1	32	NUT	4
04	ASSEMBLY ROLLER BRACKET	1	21	AXLE NUT	1	33	NUT	24
05	ASSEMBLY ROLLER GASKET	1	22	OUTLET CONNECTOR	2	34	GASKET	4
06	LONG ASSEMBLY ROLLER	2	23	COPPER BUSH	2	35	GASKET	24
07	SHORT ASSEMBLY ROLLER	2	24	AIR HOSE	1	36	GASKET	1
08	LONG ASSEMBLY ROLLER WASHER	2	25	PLASTIC GASKET	1	37	NUT	1
09	SHORT ASSEMBLY ROLLER WASHER	2	26	PROTECTIVE SPRING	1	38	NUT	4
10	NUT, JAM	1	27	BALL STOP	1	39	FLAT SCREW	5
10A	GASKET	2	28	HEX SCREW	4	40	GASKET	4
11	INLET AXLE	1				41	SWIVEL CONNECTOR	1
12	O-RING	2				42	COUPLER	1
13	PLASTIC GASKET	1						
13A	SPRING PLASTIC GASKET	1						
14	AIR BASE	1						
15	CLAMP BASE	1						
16	CLAMP	1						
17	CLAMP SPRING	1						



# AIR HOSE REEL SPARE PARTS